



## **Norco Sportsman's Club**

### **Request for Snow Removal Proposals for November 2022-May 2023**

**(multi-season proposals are accepted as well as single season proposals)**



**Responses are due to Norco by November 10<sup>th</sup> (6:30PM), 2022**

**Responses returned** to Norco Board of Directors can be dropped in a sealed envelope at the Norco street mailbox, left at the bar (when open) or postal mailed Norco Sportsman's Club, 91 Houghton Road, Princeton, MA 01541

**Questions** can be sent to [board2022@norco.club](mailto:board2022@norco.club) or leave message on clubhouse phone (978)464-5243

## Scope of Work

### Snow removal areas (refer to Norco grounds on next page)

**All yellow areas are to be plowed.** This includes roads, parking lots, and handicap parking.

- Care and attention paid to snow markers for roads, objects, and edge of lots
- Club to be notified of excess buildup of snow over several storms that needs another means of moving snow, such as a tractor with a FEL. This can happen near the Clubhouse first floor main entrance and the main gate area.
- **Do note in 2021, there is less space in the rifle range to push snow due to a DCR boundary marked by signs**

**All purple areas are to be shoveled.** These represent areas not plowable with a truck/plow. These areas have doors, handicap access ramps, and access paths to doors.

- Rifle Range – handicap ramp to shooting pavilion
- Fish Shed – footpath to access locked doors for first aid kit
- Trap Range – walkway from parking lot to front door
- Norco Club first floor – main entrance door, restroom entrance door, service entry door
- Norco Club second floor – handicap access ramp and doorway
- Norco Garage – path to garage door for people entry

### Snow removal policy

Snow removal only if predicted accumulation will be 2 inches or more

For storms predicted to be greater than 6 inches, plowing should be done in multiple visits to make future visits quick. For example, if a storm is predicted to be 12 inches, make the first pass of just plowing after 6 inches; make the second pass when the storm has ceased; also do the shoveling only once the storm has ceased.

For storms greater than 12 inches, Norco recommends making no more than 3 plowing passes. For example, if a storm is predicted to be 24 inches, make the first pass between 6-12 inches, another pass between 16-20 inches; and a final pass. If possible, perform the task with 2 passes, such as at 10-12 inches and after the storm finishes.

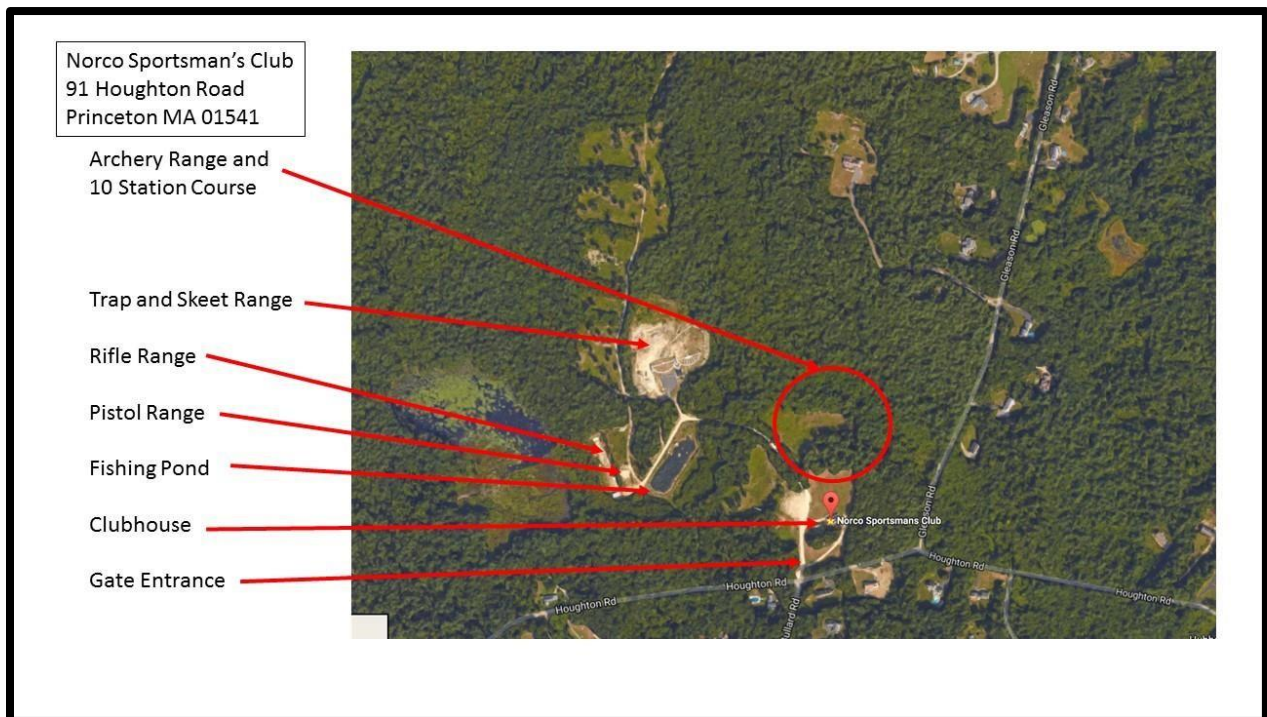
### Sanding area and policy

Sanding of shoveled areas only if covered with ice, after snow removal only at the Clubhouse first floor and second floor purple areas.



**Norco Snow Removal Diagram: Yellow=Plowing; Purple = Shoveling**

**Shoveling areas reflect doorways, ramps, and handicap access areas at the clubhouse, garage, and shooting ranges**



**Information to provide in your Response**

- Your Name, Address, Phone, Email
- Name of company and company address
- Number of company employees
- Type of truck and equipment used for snow removal, age of equipment
- Number of years' experience performing snow removal services
- Provide 3 local references; at least 1 commercial reference
- Please list any other snow/ice removal services you offer and the service pricing
- **Please provide any details for consideration of a multi-year contract instead of a one season contract**

Pricing for the table below as it applies to the Norco snow removal diagram. Provide a breakdown of the costs for the different tasks you perform. Norco property is open to drive around on Mondays 6-9PM, Thursdays 6PM-9PM, and Saturdays 1PM-4PM. Saturdays for mid-October through the end of November are active hunting days and no driving beyond the clubhouse parking lot.

**Norco November 20 \_\_\_\_ to May 20 \_\_\_\_ Plowing Contract**

	Plowing Rate	Sanding rate	Date Work Completed	Total Cost
2-6"				
6-12"				
12-18"				
18-24"				
24+ "				

**THIS IS THE CONTRACT YOU ARE BIDDING ON - PLEASE READ - NO EXCEPTIONS**

- A Snow removal estimate must include shoveling and removal of snow in front of all doors and access points to club, handicap ramp, shoveling handicap ramp, all parking areas, roads to and parking areas of ALL ranges.
- B Sanding rate will include sanding/salting as needed in front of all entrance areas and doors, handicap ramp.  
**PLEASE INCLUDE SAND IN SANDING RATE.** We will not pay for Sand, it will be paid with the rate. Additional sanding can be done if needed at Presidents discretion and must be approved before work is done.
- C The above rates will be used for payment and a copy of this form submitted with each storm. There will be no deviations from this contract. **Please make a copy of this form.**
- D Please note, there will be no additional charging for handwork. Removal contract specifies that there will be handwork involved in removal of access points, please include in your rates.